

**tiptel 545/570 office  
tiptel 545/570 SD**

**PC Software and Driver Installation  
in Windows XP/Windows 7 (32/64 Bit)**

13.04.2011

**Installation of PC Software**

Please proceed as follows:

1. After inserting the CD you purchased together with tiptel 545/570 the start-up screen will pop up. If not, start "Setup32.exe" from the CD.
2. Select the required country and language and then click "Next".
3. In the product selection under Message Center select "tiptel 545 or 570" and confirm by pressing "Install".
4. Select the language you want to use for setup. Installation will start.
5. Confirm by pressing "Next" and follow the instructions of the installation program.
6. After the installation was completed the product selection will be shown once again. If you only wish to install tiptel 545/570 PC software and no other Tiptel software confirm by pressing "Exit".

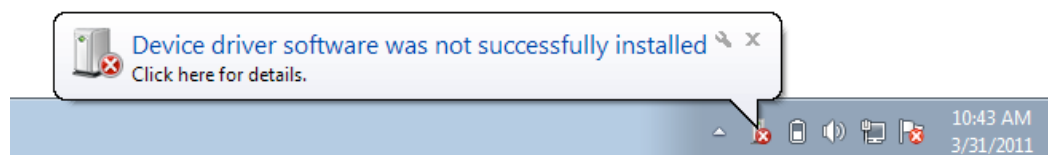
## Driver Installation

### In Windows XP

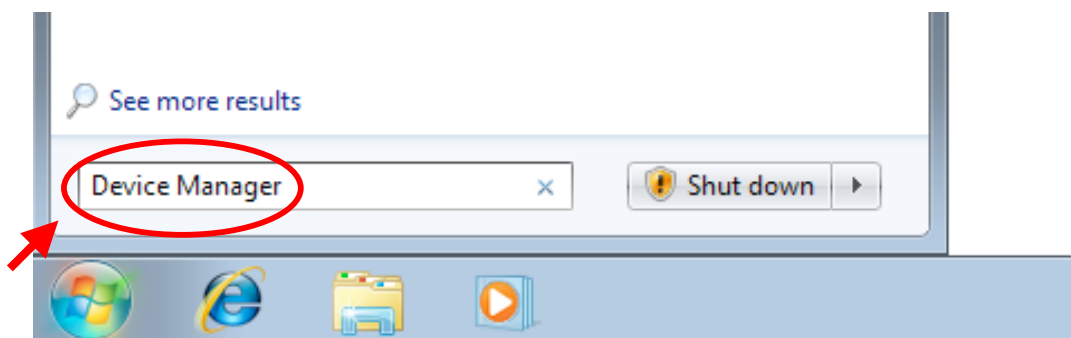
1. Connect your tiptel 545/570 to a free USB port of your PC by using the attached cable. (The attached CD must be in the CD-ROM drive.)
2. A "New Hardware Found" message will pop up (Tiptel Message Center).
3. The wizard for searching new hardware will open. Answer the question "Can Windows connect to Windows Update to search for software?" with "No, not this time" and click on "Next". Now select "Install the software automatically (Recommended)" and confirm with "Next".
4. You will see a note that the new hardware has not passed the Windows Logo Test. By all means confirm this note by pressing "Continue Installation".
5. Confirm the message "The wizard has finished installing the software for: Message Center" with "Finish".
6. Then a new note on one more found hardware component (USB Serial Port) will pop up. Proceed as described in steps 3 - 5.
7. The installation has been completed, the device can now be used with the PC software.

### In Windows 7

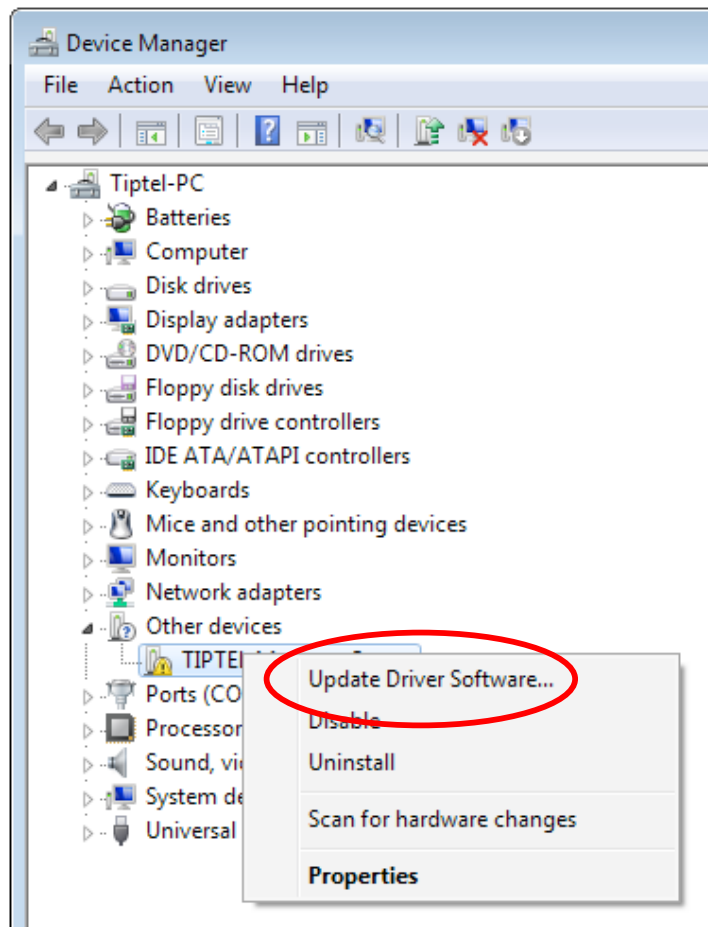
1. Connect your tiptel 545/570 to a free USB port of your PC by using the attached cable. (The attached CD must be in the CD-ROM drive.) Windows 7 detects the device but does not find any drivers.



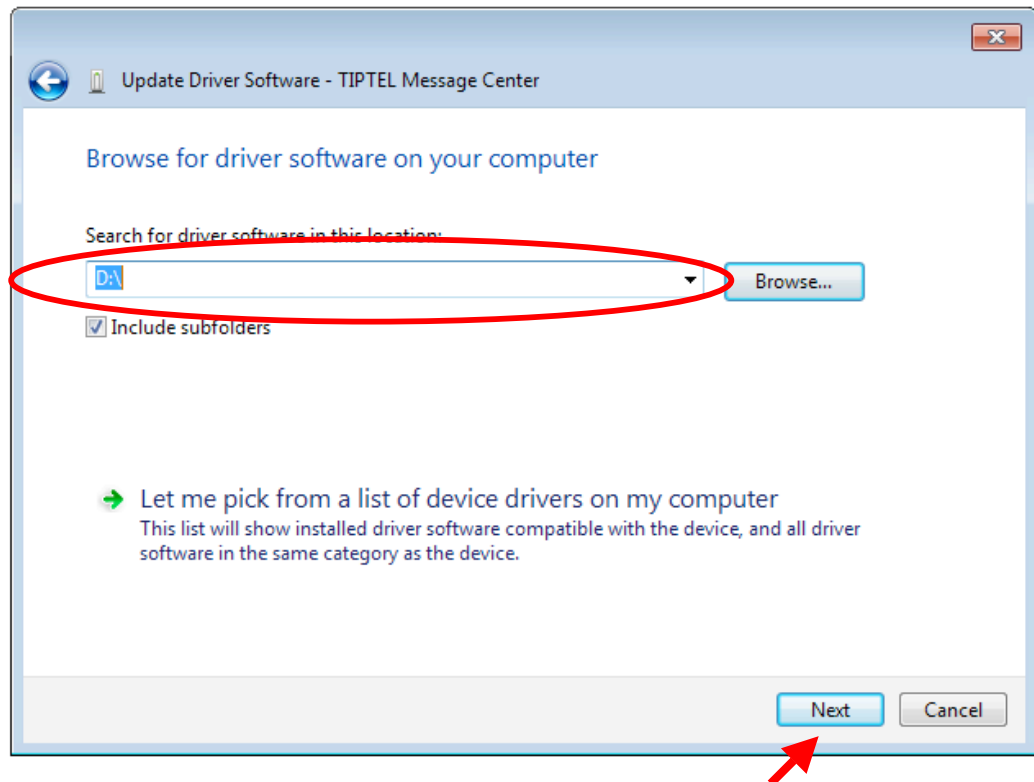
2. Click on "Start", enter "Device Manager" and press the Return key on your keyboard.



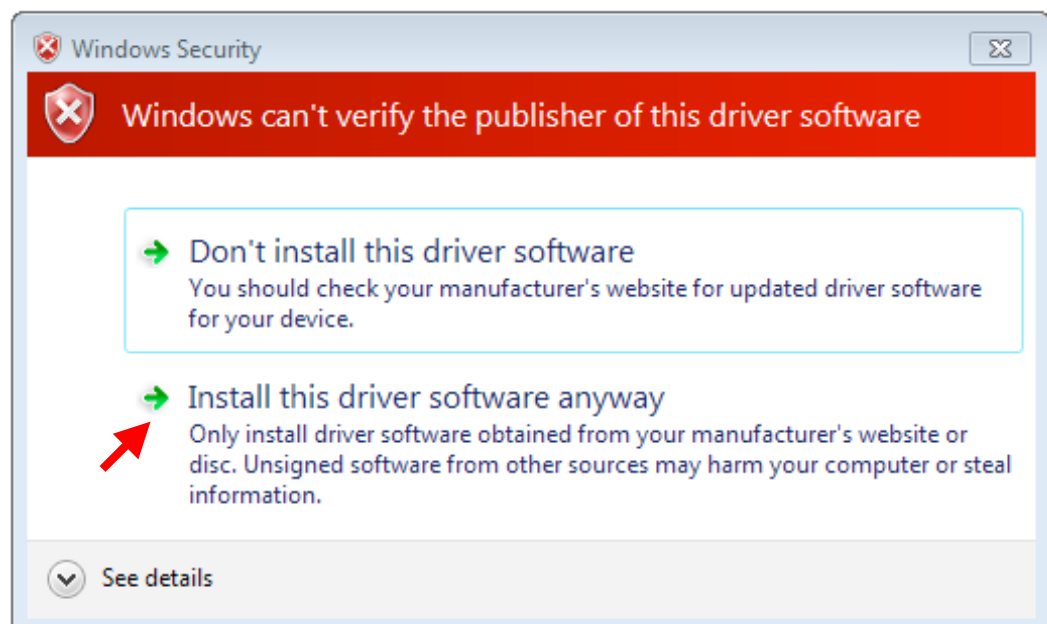
3. In Device Manager you will find the entry "Tiptel Message Center". Right click on this entry and select "Update Driver Software...".



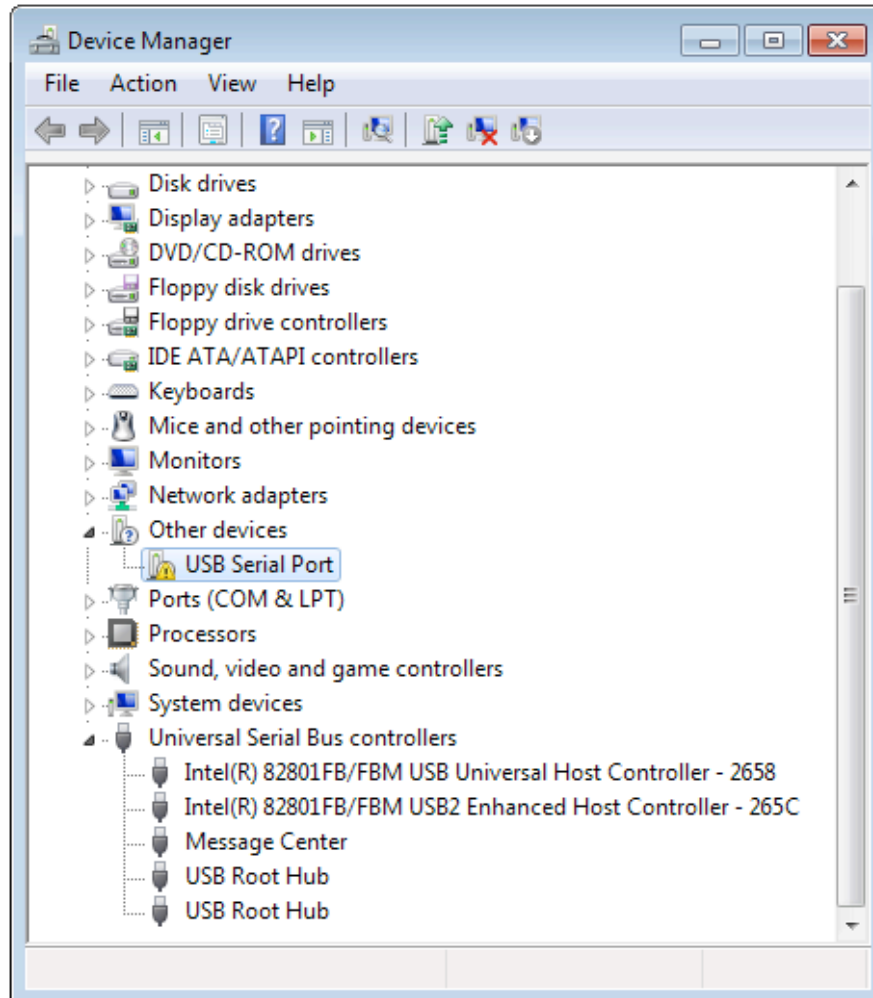
4. Select "Browse my computer for driver software". Click on "Browse..." and select the corresponding drive with the CD-ROM. Click on "Next".



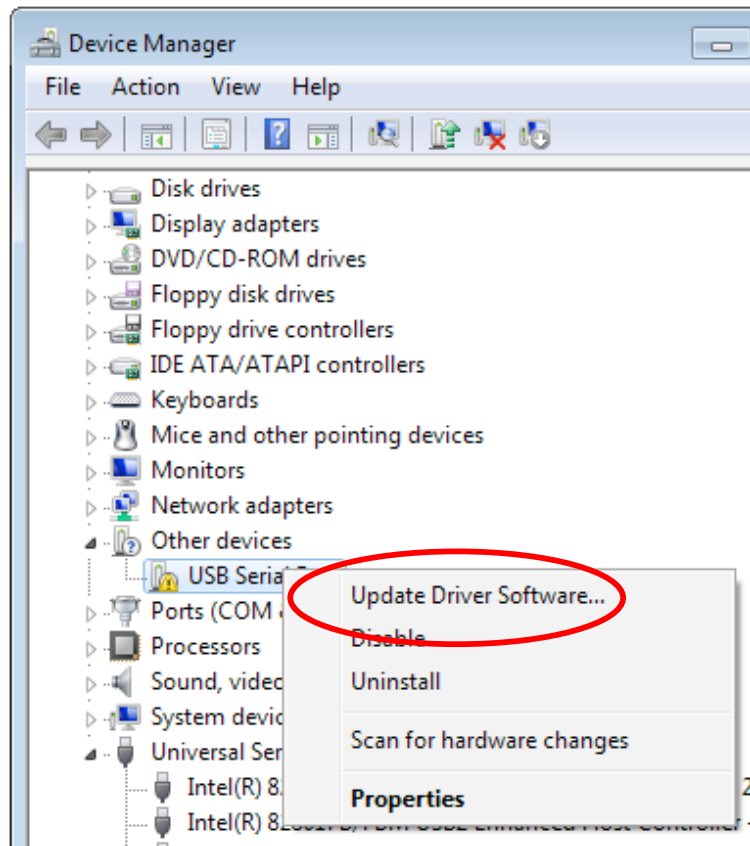
5. A Windows security message pops up. Click on "Install this driver software anyway".



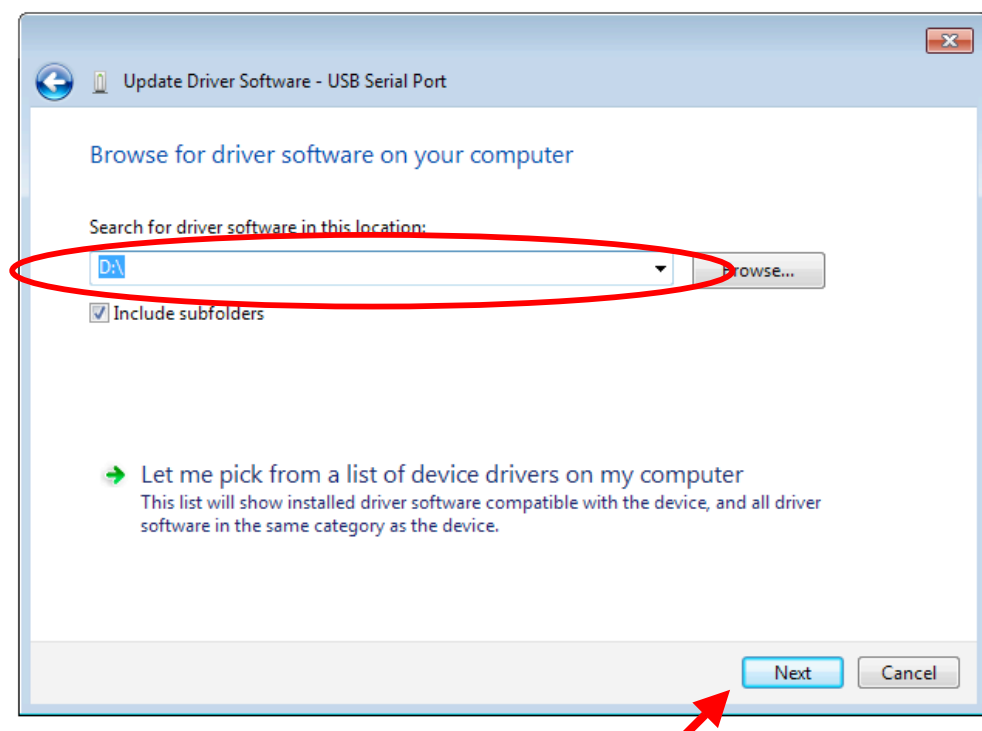
6. The first driver will be installed and a message "Windows has successfully updated your driver software" will be displayed. Click on "Close". In Device Manager you will now find two new entries: "Message Center" and "USB Serial Port".



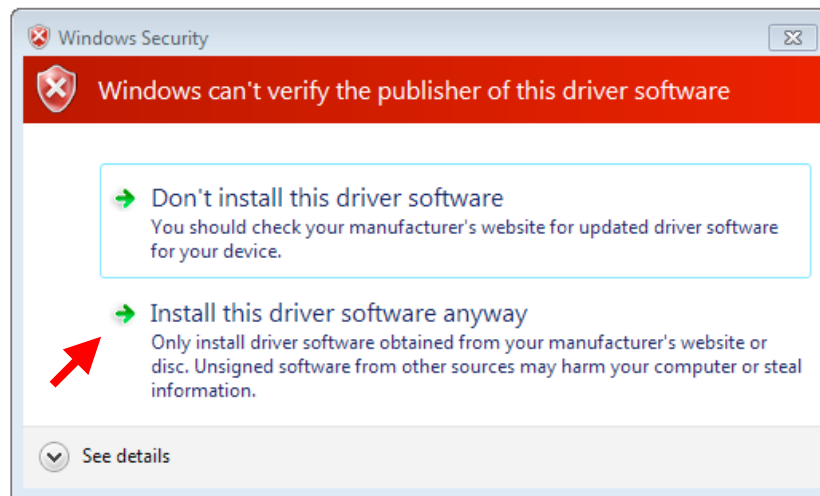
7. In Device Manager right click on the entry "USB Serial Port" and select "Update Driver Software...".



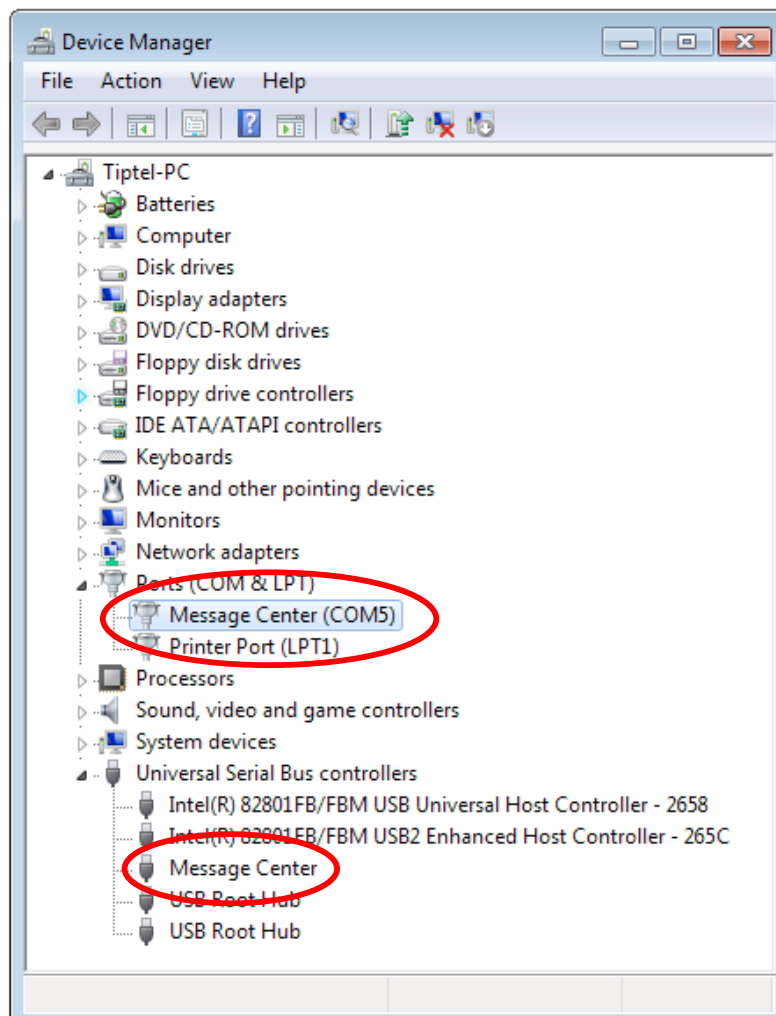
8. Select "Browse my computer for driver software" and click in the next window on "Next".



9. A Windows security message pops up. Click on "Install this driver software anyway".



10. The second driver will be installed followed by the message "Windows has successfully updated your driver software". Click on "Close". In Device Manager you will now find the entries "Message Center". One in "Ports (COM & LPT)" and another one in "Universal Serial Bus controller".



11. The installation has been completed, the device can now be used with the PC software.